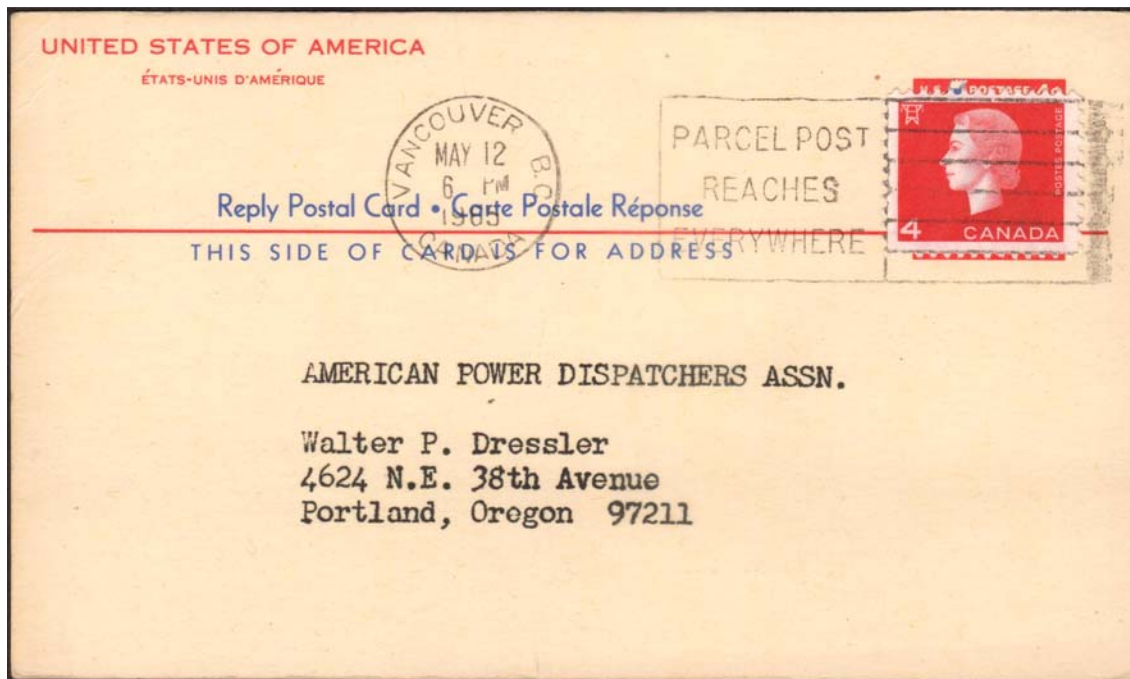


Federated Philatelist

Newsletter of the Northwest Federation of Stamp Clubs

No. 194, February, 2011

Canadian usage of 1956 US Postal Reply Card



May 12, 1965, Vancouver, British Columbia to Portland, Oregon
With 4¢ Canadian postage on a 1956 US Postal Reply Card

— *By Paul Malan*

I do believe that I've found an interesting item to write about, US UY16r. This is a used example of a detached reply card which had once been part of an unsevered pair of postal cards intended for international use.

If you simply take a quick glance at the item in question, you might very well conclude that I need stronger glasses. It appears to be an ordinary post card sent from Canada to the USA, with the postage paid by a common Canadian adhesive stamp, #404 (or 404p).

However, if you look carefully at the second illustration (see page 2), a pristine mint example of UY16r photographically cropped, but still attached to the message card, UY16m, you can tell they are really the same thing. One is unused and unsevered, the other is detached and used, and has most, but not all, of its indicium covered by an adhesive stamp.

So what is going on here? The US has had paid reply postal cards from the early 1890s to the present. These cards are an attempt by post offices to allow someone to correspond with another person without the second party incurring any cost for postage. The initiator would purchase the special double post card, address and write a

— *Continued on page 2*

In this Issue

Bill Robinson, 1926 – 2010	2
From the Editor's Desk	3
Inland Northwest Philatelic Day	4
10 Exhibiting Tips	6
SOPEX 2011	7
Northwest Federation News... ..	7
2011 Show Schedule.....	8

1956 US Postal Reply Card (continued from page 1)



1956 US Postal Reply Card

message on the message card, fold it, and then mail it. The recipient would detach the reply card, address and write a message on it, and then mail it to the initiator.

Thanks to the Universal Postal Union, this process was also made available internationally. Special cards at higher rates were issued. The US has issued six such cards, from a 2¢ + 2¢, UY2, in 1893, to an 8¢ + 8¢, UY20, in 1967. The international paid reply postal cards were not heavily used, being not well publicized and generally unknown to the public.

The person who mailed this example of UY16r apparently didn't realize that the indicium on the card, even though it said "U. S. Postage 4¢" was perfectly valid from Canada (Or any other UPU member country). So he affixed a 4¢ Canadian stamp and mailed it.

I acquired this card during Robert Dressler's "Cover Search" a few months ago. When I finally got around to looking it up in the Scott Catalogue, I got quite a shock. The value (in the 2009 Specialized) for a used UY16r is \$45.00. I suppose that, since the card's indicium didn't actually pay the postage, it would be very difficult to evaluate and price such an item.

There is one more complication. UY16, a 4¢ + 4¢ card, was issued in 1956. This particular example was used on May 12 1965. Even though the postmark year is not perfectly legible, printing on the back makes it clear that it was used in 1965.

I believe that the international postal card rate increased in 1963, since the USPS issued a 7¢ + 7¢ card, UY19, on August 30, 1963. So, apparently UY16 was no longer valid without the addition of more postage. So, I give up. I don't know what to make of this card. The only thing that I'm certain of is that it is quite fascinating.

[Editor: The international US postal card rate increased to 7¢ on July 1, 1961.]

— Reprinted with permission from the author and from The Oregon Stamp Society Album Page, Vol. XXXIII, no. 9, November 2010, p. 6-7.

Bill Robinson, 1926-2010



The BC Philatelic Society has lost one of its best-known members. Bill Robinson, a Past President and Honorary Life Member, died December 4, 2010 at age 84.

Bill was born in Winnipeg, Manitoba on February 19, 1926. He grew up in Vancouver and was graduated from the UBC in 1947 with Honours in Civil Engineering. He worked for Parks Canada and the Department of Indian Affairs in BC, Alberta, and Ottawa, and as a consultant in Vancouver until he retired in 1978. He also spent 30 years in the Militia and attained the rank of Colonel.

Bill began his philatelic life at age nine, and became a noted military postal historian. He served as president of BC Phil from 1981-86, and was chief judge for VANPEX 2004. Bill also served as president of the Royal Philatelic Society of Canada, the British North America Philatelic Society, and the Postal History Society of Canada.

He wrote extensively on Western Canadian postal history, exhibiting widely both nationally and internationally. In 1975, he became a nationally accredited judge in postal history, and served as chief judge of numerous national-level exhibitions. He was Canadian Commissioner to numerous international exhibitions, a Fellow of both the RPSC and Royal Philatelic Society, London, and a member of the BNAPS Order of the Beaver.

—Reprinted from the BC Philatelic Society Newsletter, January–May, 2011.

The Federated Philatelist

Editor

LARRY MANN
655 Washington Place SW
Mukilteo, WA 98275
425-514-8949
Larrymann2@frontier.com

Northwest Federation of Stamp Clubs

<http://www.nwfdstamps.org>

Chairman of Board of Directors

LAWRENCE CLAY
PO Box 6228
Kennewick, WA 99336-0228
Phone: 509-735-3731
E-mail: lclay3731@charter.net

Board of Directors

ERIC A. RANGER
New Westminster, British Columbia

KEITH SPENCER

Edmonton, Alberta

LAWRENCE CLAY
Kennewick, Washington

LEONARD LUKENS
Portland, Oregon

Executive Secretary

WILLIAM R. GEIJSBEEK
6616 140th Place NE
Redmond, WA 98052-4649
Phone: 425-883-9390
Email: geijsbeek@verizon.net

Treasurer

ALEX HADDEN
#19 – 7651 Francis Road
Richmond, B.C. V6Y1A3
Phone: 604-272-2614
E-mail: alex-hadden@shaw.ca

Judging Chairman

DICKSON PRESTON
Seattle, Washington

History Chairman

LEN LUKENS
Portland, Oregon

Youth Program

CAROL EDHOLM
Mountlake Terrace, Washington

Webmaster

DAVID HARRIS
Medical Lake, Washington

From the Editor's Desk

I was glad to see that the Federation board has appointed Dickson Preston as our new Judging Chairman (see *Northwest Federation News* on page 7). I've gotten to know Dickson over the past few years, and he was kind enough to help me as I've become more serious about exhibiting. It means a great deal to have a mentor, and I appreciate Dickson's patience in reviewing page drafts and responding to my questions with helpful advice.

Along those lines, I recently discovered an article with *10 Exhibiting Tips* by Bob Ingraham. Bob is an experienced exhibitor and judge and served as exhibits chair for VANPEX, the British Columbia Philatelic Society's annual stamp show, for seven years. Although first published in 2007, his tips are timely and good advice for exhibitors.

And for more on stamp shows and exhibiting, see page 8 for a show schedule for the rest of 2011. See page 7 for an article on SOPEX, the annual show of the Southern Oregon Philatelic Society. They are looking for exhibitors!

—Larry Mann, Editor

Michael Dixon

Let me introduce Michael Dixon, who is new to the Northwest and new to the Federation. Michael lives with his wife in Portland, Oregon. He is a recent transplant from the Washington, DC area where he was very active in philately. He started collecting stamps at the age of 8. His philatelic interests were again aroused in 1972 in England when he started collecting and exhibiting Peru nationally and internationally. He is a Fellow of the Royal Philatelic Society of London. For his services to the RPSL Michael was awarded the prestigious London Medal in 1986. He has served as the President of several local and international stamp societies and was on the committee of the International Show in London 1980.

After relocating to the USA in 1983, Michael joined the APS and was appointed a Special Representative of RPSL in the USA. Starting in 1985, he served both on the board of NAPEX and later as General Manager. Michael has exhibited widely both nationally and internationally. He is an APS, British Philatelic Federation, and FIP accredited judge. He has served as a Director of APS, Vice President of the American Philatelic Congress, and a member of several US national societies (PHS, AAMS, etc.). He currently serves APS as a member of the Campaign for Philately committee. He served as President of Washington 2006 show. And now, he is heading the Oregon Stamp Society committee to bring PIPEX to Portland in 2012, and beyond. Welcome to the Northwest, Michael.

April 3 Annual General Meeting in Moses Lake

As previously announced, the AGM for the NWFSC will be held at Moses Lake on April 3. It is apparent that few clubs will be represented and thus any voting will not be possible. The Board of Directors has chosen to hold the mandatory elections for directors by mail. This is being done. Questions will be entertained and passed along to the Board.

Planning for PIPEX 2012 is well underway. It should certainly be the equal of PIPEX 2009 which was our best in several years. Thanks goes to the PIPEX 2012 planning committee.

—Bill Geijsbeek

Inland Northwest Philatelic Day

After a year's absence, the once annual Inland Empire Philatelic Day will return on Saturday, April 9, 2011 at the Best Western Hotel in Moses Lake, Washington. The event is co-sponsored by the Northwest Federation of Stamp Clubs and the Inland Empire Philatelic Society.

Schedule

Friday, April 8

- 5:30 PM – Hospitality Room opens. Beer and wine will be available.

Saturday, April 9

- 7:30 AM – **Northwest Federation Annual General Meeting**
- 8:00 AM – Philatelic Day Registration, Log in auction lots, renew and make new acquaintances. Coffee and rolls will be available.
- 8:50 AM – Welcome and announcements
- 9:00 AM – Program by Collyer Church, *Collecting Censored Postal History; a personal view*
- 10:15 AM Break -- Finish entering auction lots and view auction lots
- 11:00 AM – Program by Michael D. Dixon, *The Humble Aerogramme: Precursors and development during WWII as illustrated by British Military Mail*
- **12:15 PM – Lunch**
- 1:30 PM Program by Ingeburg Fisher, *Nuremberg: A Tale of the City*
- 2:30 PM – Program by Lyman Caswell, *Hungary 1919: The Szeged Overprints*
- 3:30 PM – Break. The silent auction closes at 3:40.
- 3:45 PM – Clothesline and one page exhibits
- 4:15-6:15 PM – Live auction
- **6:20 PM – Dinner**
- 7:30 PM – Auction settlement for both the live and silent auctions

AUCTION I - A SILENT AUCTION

Enter as many lots as you desire. Starting price on each lot is minimum of \$3.00. Bidding increments are not applicable and lots may not be subjected to a minimum or reserve price. Lots will be awarded to the highest bidder as of the end of the designated silent period time. **The designated end time is 3:40 PM.**

AUCTION II - REGULAR FLOOR BID AUCTION

Everyone is urged to enter at least three lots. Additional lots may be entered at the sole discretion of the auctioneer. Time constraints limit floor lots to not more than 150. Minimum opening bid is \$3.00 per lot or the sellers stated minimum selling price. **Minimum price, if any, must be stated on the lot card.** Bidding increments will be announced by the auctioneer.

AUCTION RULES

- Precautions will be taken to safeguard auction lots.
- Insurance is the responsibility of the seller.
- The Northwest Federation of Stamp Clubs, The Inland Empire Philatelic Society, the Inland Northwest Philatelic Day committee, the Best Western Lake Inn and Conference Center, their agents, officers, employees, volunteer or paid assistants or any other person authorized to perform any task in connection with the auction lots shall NOT be liable for damage or loss or claim thereof of any kind or for any reason whatsoever.

ALL PARTICIPANTS

- You may enter material in one or both auctions.
- Turn lots over to auction manager during registration.
- Lots must be identified by condition, catalog number, description, and value.
- A non-refundable lot fee of \$2.50 will be collected regardless of the number of lots entered in either or both auctions.
- Register by Friday, April 1 to receive an advance supply of auction lot cards, which can be filled out before your arrival in Moses Lake.

**Northwest Federation
Annual General Meeting
7:30 AM,
Saturday, April 9, at
Inland Northwest Philatelic Day,
Moses Lake, Washington**

Inland Northwest Philatelic Day

Motels

The Best Western Lake Inn & Conference Center is initially holding a block of rooms at the group rate of \$70.00 per night (Friday and Saturday Nights). This rate includes breakfast (Buffet) both Saturday and Sunday morning. Please be sure to identify you are with the "stamps" group. "Stamps" is the key word for the reduced rate.

- **Address:** 3000 Marina Drive, Moses Lake, WA
- **Phone:** 1-509-765-9211 or 1-800-235-4355.

Directions

- **I-90 west** - Exit 176 (Broadway) - The motel is on the left as you cross I-90.
- **I-90 east** - Exit 176 - the exit intersects (Broadway) and the motel is directly in front across Broadway

Other motels nearby

- Motel 8 1-800-943-1991 1-509-765-8886
- Motel 6 1-800-466-8356 1-509-766-0250
- Oasis Budget Host Inn 1-509-765-8636
- Lakeshore Motel 1-509-765-9201

Registration

Name(s): _____

Address: _____

Phone: _____

Email: _____

Must be received no later than April 1, 2011.
\$5.00 extra per meal for late registration at the door.

Mail to:

David Harris
 20908 W. Bannock Ave.
 Medical Lake, WA 99022

509-299-7543
 sqpiano@gmail.com

Description	Cost	Meals	Sub total
Participation ticket (registration and lunch)	\$40.00	Menu: Taco salad bar	
Fellowship ticket (registration and dinner)	\$50.00	Menu: Roast tender chicken breast in shiitake mushroom sauce	
Fellowship "Plus" ticket (registration, lunch & dinner)	\$70.00	(both lunch and dinner)	
Extra lunch ticket	\$20.00		
Extra dinner ticket	\$35.00		
TOTAL ENCLOSED (Check or money order only) Payable to David Harris			

10 Exhibiting Tips

— By Bob Ingraham

I have served as exhibits chair for VANPEX, the British Columbia Philatelic Society's annual stamp show, for seven years. I have come up with what I hope are 10 useful tips for exhibitors. I also recommend the *APS Manual of Philatelic Judging* for detailed information about what is allowed and what is not in national-level exhibits.

1. Find a new "hook": You *could* assemble an exhibit of re-entries of Canada's Admiral stamps or colour varieties of Great Britain's Machin Heads. But those exhibits have been done before — probably a thousand times.

Finding a new way to look at stamps and covers will hook viewers and judges alike, and will be more fun for the exhibitor. And keep this in mind: exhibits need not contain expensive items. Award-winning exhibits have been assembled from common, dirt-cheap stamps and covers.

2. Tell a story: A philatelic exhibit is not just a stamp or postal-history collection. It's a purposeful assemblage of stamps and/or covers, perhaps with collateral items, that illustrates a philatelic point you are trying to make or a story you'd like to tell.

Do not include anything in your exhibit that falls outside its stated scope. And don't pad the exhibit with similar items: One example of a particular stamp or type of cover is all that's needed, unless other examples introduce new information.

3. Do not "overwrite" your exhibit: You may be convinced that your words are golden, but it's the material in your exhibit that will win a medal, not excessive verbiage. Careful proofreading is important. If you are using a word processor, take advantage of your spell checker!

4. Employ the KISS principle (Keep it simple, stupid): I certainly don't mean to imply that you are stupid, but we exhibitors sometimes do get carried away with our efforts to squeeze as much material into an exhibit frame as possible.

It *may* be possible to get six covers on a single page (by overlapping and using windows), along with a complete set of a dozen or so stamps, a photograph or drawing or two, and maybe a map, not to mention a 600-word description (in a 4-point font).

As I said, it *may* be possible, but the result would be a design disaster! So, keep it simple. A single cover on a page, with perhaps a small photo or other illustration, along with brief write-up, is visually more appealing and satisfying than the crowded page (and easier to create). You could even devote a page to a single stamp, thus highlighting the stamp and showing how creative you are!

5. Use standard fonts: The fonts that are used by 99% of print publishers were not created by Microsoft, but have been around for decades, even centuries, and will continue to be used, simply because they are readable. Computers give the wannabe publisher access to scores of goofy, nearly unreadable fonts which exhibitors should avoid like the plague.

Serifed fonts (the letters have little points at the ends) have a classic look because they *are* classic. It's said that the points represent marks that chisels made in stone by Roman stone carvers. It just makes sense to use a serifed font, like Times New Roman, for an exhibit of classic stamps, and a more modern font, like Helvetica Neue, for more modern stamps. However, handwriting or printing by hand is still acceptable. The appearance of an exhibit, while important, carries far less weight than a good philatelic story supported by the appropriate philatelic and collateral material.

6. Do not decorate your sheets unnecessarily, or use gaudy stationery: In the past, white or ivory-toned paper was the rule, but exhibitors these days, at least in regional and national-level exhibitions, are less conservative and more creative. Coloured exhibit sheets, sometimes with unobtrusive patterns or texture, are often seen and can enhance an exhibit, whereas a white or ivory-toned paper seems to highlight the faults of "dirty old covers" in postal history and cover exhibits. Avoid frame lines, which eat up valuable display space; keep in mind that every exhibit sheet will benefit if you maximize white space. No one wants to read acres of print, even if your words are golden (which they probably won't be!).

If you don't use a computer to design your exhibits, feel free to use quadrilled paper, which helps perfect layout. Feel free to scan and print images of the backs of covers (or the fronts if the backs are what make the covers significant) or of details of covers or stamps. Modern ink-jet and laser printers are so good that it's necessary to identify digital images as reproductions (which should always be significantly smaller or larger than the originals).

7. A synopsis is your friend: Most exhibitions require synopses, and all judges appreciate them. Think of a synopsis as a sales pitch for your exhibit. A useful synopsis concisely outlines the purpose of the exhibit, provides general information about its content and plan, and points out philatelic items that are unusual or rare. A good synopsis guides

10 Exhibiting Tips *(continued from page 6)*

the judges in their study of your collecting area, greatly improving the quality of the judging and maybe even the award given.

If you write the synopsis before actually starting to put your exhibit together, you can use it as a guide. Your exhibit may evolve as you work on it, but you can always re-write the synopsis to reflect changes.

8. *Exhibit for yourself, not for the judges, other collectors, or medals:* Medals are in fact relatively unimportant. The real rewards in exhibiting come long before the exhibition, when you are working to acquire specific items, when you do research on them, and when you write up and design your exhibit. You'll never have a better opportunity to learn about your collection.

(Not all exhibitors exhibit for the same reasons. Some seem to collect medals as fervently as they search out stamps and covers. Some pray for gold medals and "Best of Show" and "Champion of Champions" awards because they know that such medals awards will substantially increase the cash value of their exhibits. (Some exhibitors actually pay "professional exhibit designers" to create exhibits from their collections, a practice which I believe should be banned outright.)

9. *Burn the midnight oil to create your title page:* The importance of the title page cannot be overstated. It introduces your exhibit (and you!) to your fellow collectors, the public, and the judges. The title page should concisely state the purpose of the exhibit and outline what the viewer will see. It should be visually stimulating (don't be afraid to include graphic elements along with your text), and it should lead the viewer naturally to the next sheet. Do not promise what you cannot deliver.

10. *Don't take judges too seriously:* It is common for the same exhibit to do well at one exhibition and poorly at another, even if the exhibitor followed the advice of judges from the first exhibition and tried to improve it for the second. Judges are just collectors who have decided that judging is one way they can enjoy their hobby and give something back to it. They don't know everything, and they can and do make mistakes. Far more often, they provide useful feedback. But at the end of the day, you are the best and final judge of your exhibit, regardless of the medal you receive.

— *Reprinted with permission from the BC Philatelic Society Newsletter, September-December, 2007, page 4.*

Northwest Federation News

- **Keith Spencer** has been appointed by the NWFSC Board of Directors to fill the open slot on the NWFSC Board of Directors. Keith's term will end in 2011. Keith lives in Edmonton and is very active in the Edmonton Stamp Club. He has been a strong supporter of the NWFSC for years. We welcome Keith to the Board.
- **Gray Scrimgeour** has asked to step down as the NWFSC Judging Coordinator. He has held that position since the late 1990's. In that role he has been the liaison between the NWFSC and both the APS and the RPSC Judges Committees in matters of procuring qualified judges for the various PIPEX shows that have been held over the last dozen years. This ranges from helping the local PIPEX committees find adequate and appropriate judges for their shows and within the bylaws of the NWFSC, and to satisfy the requirements of both the APS and the RPSC. This was sometimes easier said than done. Thanks Gray for a job well done.
- **The Board has appointed Dickson Preston** to fill Gray's rather large footprints. But if anyone can fill them, Dickson is certainly the one to carry on. He is an accredited APS judge. On the local PIPEX level he was the Seattle 2008 PIPEX Show Judging Coordinator. He is also the Judging Coordinator for the upcoming Portland PIPEX shows. Thus in his new role, he will be interfacing with himself, at least for the next several shows. Dickson is well known within national APS judging circles. Welcome aboard Dickson.
- As announced before, the **2011 Annual General Meeting** of the NWFSC will be held at the Inland Northwest Philatelic Day in Moses Lake on April 9th. This seemed like the best option to the NWFSC Board. It will be a smaller than usual meeting as there will be less to attract representatives from the 32 NWFSC clubs

SOPEX 2011

SOPEX 2011 is requesting exhibitors for the annual show of the **Southern Oregon Philatelic Society** on April 2-3 in Medford, OR. There will be two qualified judges. Entry fee is \$2 per frame plus return postage costs. Personal delivery can be made before 9 AM. on Saturday, April 2. There is a limit of 48 pages per exhibit, which will be mounted in 12-page frames. The deadline for entries is March 21.

For a full prospectus contact Larry Crain at P. O. Box 4395, Medford, OR 97501 or by email at larry.crain@gmail.com.

PACIFIC NORTHWEST 2011 STAMP SHOWS / BOURSES

includes other major shows and holidays in bold

2011			Revised: Feb 9, 2010		
SHOW DATES					
FRI	SAT	SUN	SHOW NAME	Location	Type
		Feb-13	Fenwick	Seattle	bourse*
Feb-11	Feb-12	Feb-13	APS AmeriStamp Expo 2011	Charleston, SC	WSP show
	Feb-19	Feb-20			
		Feb-21	PRESIDENT'S DAY (Monday)		
Feb-25	Feb-26	Feb-27	APEX 2011	Anchorage	show
	Mar-05	Mar-06	NWSDA Show	Seattle	bourse*
	Mar-12	Mar-13	VICTOPICAL	Victoria	bourse
		Mar-20	Sno-King Stamp Club Show	Everett	show
	Mar-19		STAMPEX - Spring 2011	Salem	bourse
		Mar-20	SPRINGPEX 2011	Eugene	show
Mar-25	Mar-26	Mar-27	Edmonton Spring National Show	Edmonton	Nat'l show
	Apr-02	Apr-03	Bellingham Stamp Club Show	Bellingham	bourse*
	Apr-02	Apr-03	SOPEX 2011	Medford	show
	Apr-09		Inland Empire Philatelic Day	Moses Lake	seminar
		Apr-10	Fenwick	Seattle	bourse*
	Apr-16	Apr-17	Evergreen (Boeing) Stamp Club Show	Kent	bourse
	Apr-23	Apr-24			
		Apr-24	EASTER		
	Apr-30		OLYMPIA ROUNDUP	Olympia	bourse
Apr-29	Apr-30	May-01	WESTPEX 2011	San Francisco, CA	WSP show
	May-07	May-08			
May-13	May-14	May-15	Rocky Mtn Stamp Show 2011	Denver	WSP show
	May-21	May-22	GESSPEX	Redmond	show
	May-28	May-29			
		May-30	MEMORIAL DAY (Monday)		
	Jun-04	Jun-05			
		Jun-12	Fenwick	Renton	bourse*
	Jun-18	Jun-19			
	Jun-25	Jun-26			
	Jul-02	Jul-03			
		Jul-04	INDEPEDENCE DAY (Monday)		
	Jul-09	Jul-10			
	Jul-16	Jul-17	Evergreen (Boeing) Stamp Club Show	Kent	show
	Jul-23	Jul-24			
	Jul-30	Jul-31			
	Aug-06	Aug-07			
	Aug-13		Strait Stamp Show	Sequim	show
		Aug-14	Fenwick	Renton	bourse*
Aug-12	Aug-13	Aug-14	APS StampShow 2011 (4 days)	Columbus, OH	show
	Aug-20	Aug-21	Victoria Stamp & Coin Fair	Victoria	bourse*
	Aug-27	Aug-28			
	Sep-03	Sep-04			
		Sep-05	LABOR DAY (Monday)		
	Dec-24	Dec-25	CHRISTMAS (Sunday)		
		Jan-01	NEW YEARS DAY 2012 (Sunday)		

PIPEX 2012 – May 11-13 in Portland

PIPEX 2013 – May 10-12 in Portland

PIPEX 2014 – May 9-11 in Portland

PIPEX 2015 – May 8-10 in Portland